

PART OF THE NE.1/4, OF SECTION 28, T.6N., R.2E., S.L.B. & M.

160

ARROWHEAD MEADOW PH1

IN WEBER COUNTY

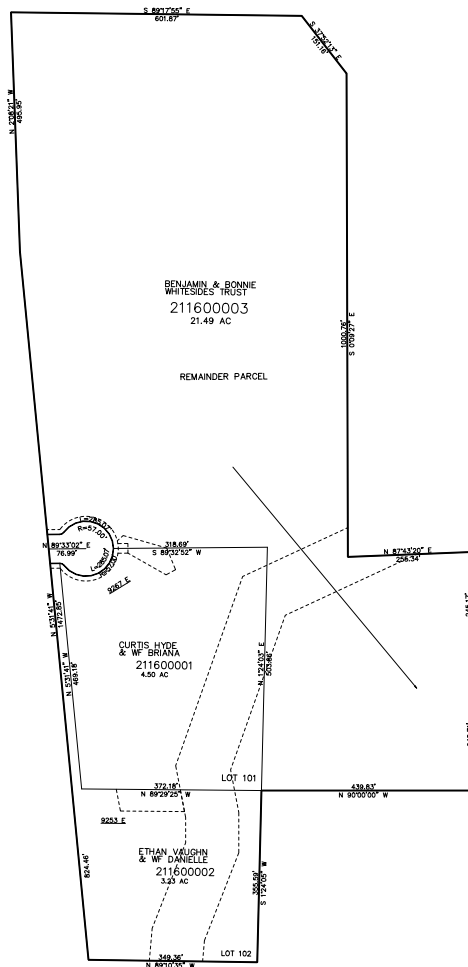
TAXING UNIT: 520

SCALE 1" = 200'

SEE PAGE 37

SEE PAGE 37

SEE PAGE 37



10' UTILITY & DRAINAGE EASEMENTS EACH
SIDE OF PROPERTY LINES AS INDICATED
BY DASHED LINES EXCEPT AS OTHERWISE
SHOWN.

SEE PAGE 37

FOR COMPLETE ENG DATA SEE
ORIGINAL DEDICATION PLAT IN
BOOK 88 PAGE 31 OF RECORDS.